

DEC NEWSLETTER

Principal's Address

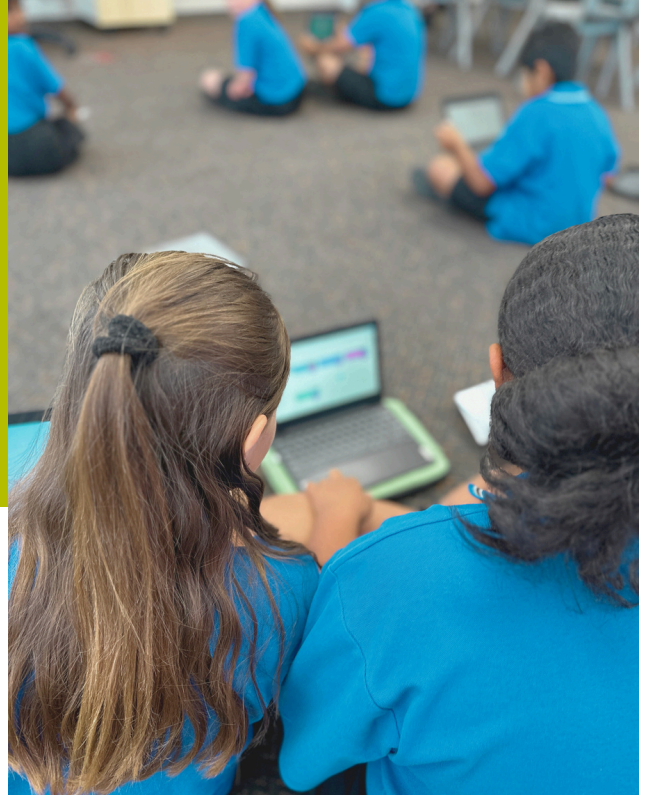
Throughout the final few days of this term, we've coordinated **"The Road to Christmas"** which is an opportunity for ākonga to participate in a range of activities designed to remind them of why we celebrate at this time of year. It also is an opportunity to turn our thinking outwards and serve in different ways.

One of the highlights in this event is an activity called **"Follow the Star"** whereby we place 5 stars across the kura in various hiding spots and the ākonga search for them during morning tea. Our intent is that finding a star reminds them of that hope the wisemen would have felt when they followed the star to Jesus.

As we continue to participate in different festivities, we welcome you to join us in sharing this story with your child — or perhaps, they can share it with you. **Jesus Christ is a continual reminder** of hope. Our prayer for whānau this season is a renewal of hope.

Blessings,

Andy Lawrence



On the Radar

- Principal's Address
- Itinerant Music — Trial Lessons
- Bricks in the Break
- It's the Final Countdown
- End-of-Year Prizegivings & Orientation
- 2026 Key Dates
- It's All About Communication, Communication, Communication
- Friends of the School



Itinerant Music — Free Trial

In 2026, Elim Christian College Henderson is bringing an itinerant music programme to support the artistic endeavours of our young people. We welcome David & Rebekah, founders of Cherry Music Studio who are graciously offering a free trial to any whānau who wish to experience what they can offer.

Thinking about enrolling your child in music lessons next year? Here's a quick guide from the directors themselves, answering some of the most common questions they receive:

What instruments are available?

In 2026, we're offering lessons in piano, ukulele, acoustic guitar, and electric guitar.

Do we need to own a piano to start lessons?

Not at all! A full-size (88-key) keyboard or digital piano is recommended if your child wants to continue, but it's not essential to begin.

How much do lessons cost?

Lessons are \$40 for a 30-minute one-on-one session. Payment is made per term, in advance.

How often are lessons?

Students will have one lesson per week during school hours, depending on approval from their classroom teacher.

Can we try a lesson first?

Yes! Trial lessons will be available before Term 1 begins. This is a great way for your child to meet the tutors, Rebekah or David, and choose the right instrument.

Will there be performance opportunities?

Definitely. After completing three terms of lessons and with consistent practice, students will have opportunities to perform at Elim School in front of friends and whānau. Cherry Music Studio also hosts two student concerts each year to celebrate our young musicians' progress.

Feel free to reach out to us at cherrymusic.elim@gmail.com



Cherry Music Studio

MUSIC LESSON

AT ELIM HENDERSON, FROM 2026!

David and Rebekah will offer

- Piano/keyboard lesson
- Guitar/ukulele lesson
- Music therapy for children with special needs

Bricks in the Break

Looking for a fun, hands-on holiday programme to kick off the new year? The Bricks 4 Kidz LEGO® STEAM Holiday Programme is back at Elim Henderson this January, and it's packed with energy, creativity, and adventure!

Each week brings a new theme—from ninja battles and speedy builds to movie-making, magic tricks, treasure hunts, and more. Kids will explore engineering and design through playful challenges, all while developing teamwork and problem-solving skills.

Check out their flyer here for more [information](#).



Swing for the Fences

A huge shoutout to our first cricket team, who represented Elim Henderson with energy and enthusiasm at the recent Henderson Cluster Zones!

For many of our students, it was their first time playing cricket in a competitive setting—and they gave it everything. From learning the ropes to celebrating wickets and big hits, it was a day full of encouragement, teamwork, and trying something new.

We're especially proud of the way our players supported one another and embraced the challenge. And a special congratulations to our three MVPs, recognised for their outstanding effort, positive attitude, and great sportsmanship throughout the day!

A big thank you to all our players for their commitment and awesome attitude—and to [insert teacher's name] for supporting and coaching the team so well. We're proud of you all!



It's the Final Countdown

As we head into the final stretch of the school year, here are some important dates and events to keep in mind:

Week 10 (8–12 December):

- 🏊 Swimming – Monday, 12:30–2:30pm
- 🍷 Y8 Graduation Dinner – Monday evening
- 🏆 End-of-Year Prizegiving (Maunga Y0–4) – Tuesday at 2:15pm
- ❤️ 2026 Whānau Orientation & Y1 Visits – Wednesday morning
- 🏆 End-of-Year Prizegiving (Ngahere Y5–8) – Thursday at 2:15pm

Week 11 (15 December):

- 🎭 Whole School Mufti Day (Fundraiser) – Monday
- 🇳🇿 Last Day of School – Tuesday, 12:00pm finish

Let's finish the year strong and celebrate all the progress, fun, and growth from 2025!

Prizegiving & Orientation – Celebrating, Honouring, and Looking Ahead

Our end-of-year Prizegiving Ceremonies are a treasured time to reflect on the year, celebrate student achievement, and honour the journey of our ākonga. **Please note**, whānau whose children are recipients **of awards have been notified earlier this term**, however, we welcome any and all whānau to join us to celebrate these ākonga:

- Maunga Team (Y0–4): Tuesday 9th December at 2:15pm
- Ngahere Team (Y5–8): Thursday 11th December at 2:15pm
- This special ceremony also includes a celebration of our Year 8 leavers as they prepare to step into their next adventure.

👉 Orientation Morning – Wednesday 10th December

Our **2026 Orientation** will take place on **Wednesday morning**. This is a chance for students to:

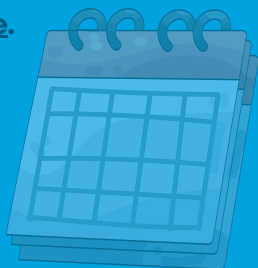
- Meet their new kaiako and classmates
- Settle in and build early connections for next year

The regular programme will continue after orientation. Parents and caregivers are warmly invited to attend an information session and connect with other new whānau—it's a lovely way to start the journey together.

Looking Ahead: 2026 Term Dates

As we wrap up the year, it's a great time to look ahead to 2026. Next year's term calendar is now available to help you start planning early!

You can view or download the full 2026 Term Dates Calendar [here](#).



Key reminders:

- Term dates include public holidays and teacher-only days for the year
- A detailed “Term Ahead” planner will be shared early next year, outlining key events and learning focuses for Term 1

We look forward to another year of learning, growth, and connection in 2026!

It's All About Communication, Communication, Communication

We're excited to introduce **Skool Loop**, a new communication tool we'll be using from the start of 2026 to share key reminders, notices, calendar updates, and more—all in one easy-to-access place.

This app is part of our response to community feedback asking for more centralised and whānau-friendly communication. **It's also part of the Zero Data initiative**, meaning it can be used without mobile data or WiFi.

From Term 1, we'll begin using Skool Loop for notices and reminders. It will also allow parents and caregivers to submit absences directly via the app. All existing communication channels will remain in place to give whānau flexibility.

💡 A note about ads:

To keep the app free, Skool Loop includes static advertisements. If you're a whānau member who owns a business and would like to share your services with our community, please contact me directly—I'm happy to pass your details on.

🔧 Need help setting it up?

Full download instructions and guidance are available in the [Principal's Pānui](#). We encourage all whānau to download the app before Term 1 so you're ready to stay connected from day one!

Friends of the School

Interested in Becoming a Friend of the School?

We're excited to launch Friends of the School – a refreshed approach to how we organise and support events, initiatives, and connection across our kura community.

This new model builds on the incredible work of our ARISE Parents Committee and is designed to:

- Provide clearer structure and smoother coordination through a designated staff lead
- Support consistent, sustainable planning for school events
- Continue to welcome and value whānau involvement in ways that are flexible and inclusive

Whether you've been involved in the past or are new to our community, we'd love to hear from you if you're interested in staying connected and hearing about opportunities to help out in 2026.

To express interest, simply register via this [form](#) and we will be in touch with ways you can help.

Thank you for your continued support—it truly helps make our kura a place of warmth, belonging, and shared purpose.

