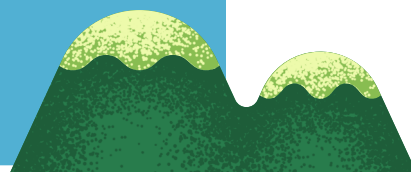


MAUNGA NEWSLETTER

Term 2 2025



ELIM EXPLORATION: WHAKAAHUA / DESIGN

FOCUS: SCIENCE - How can we use our creativity and ideas to design something that makes life easier or helps solve a problem?

ARISE Aspect: COURAGE

Bible Programme

This term, we will explore scripture and Bible characters that help us to show courage.

Ākonga will learn:

- that courage means trusting God even when they feel afraid.
- Bible characters showed courage by doing what was right, even when it was hard.
- courage can help them face challenges and make wise choices.
- God gives people courage to help others and stand up for what is good.

Study Scripture

Weeks 1-3

"I can do all things through Christ who strengthens me." – Philippians 4:13

Weeks 4-6

"For I know the plans I have for you," declares the Lord, "plans to prosper you and not to harm you, plans to give you hope and a future." – Jeremiah 29:11

Weeks 7-9

"Commit your work to the Lord, and your plans will be established." – Proverbs 16:3

Theme / Integrated Inquiry

Central Idea: WHAKAAHUA / DESIGN

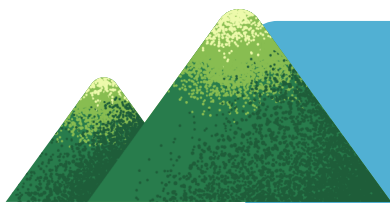
This term, ākonga in Maunga Team will explore how we can use our creativity and ideas to design something that makes life easier or helps solve a problem.

Year 1-2 Changes in Materials: Observe and describe physical and chemical changes in materials.

- What happens when we heat or cool different materials?
- How do materials change when we mix them together?
- What materials can we change to make something useful or fun?

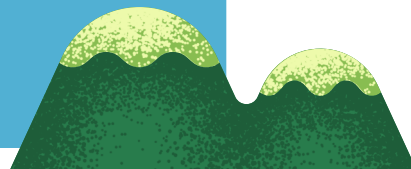
Year 3-4 Using Materials for Functional Design: Identify and compare changes in materials and their practical uses.

- What happens when we combine different materials or substances?
- How do materials behave when we change their shape or structure?
- How can we test materials to find out if they are strong, flexible, or waterproof?
- How do designers choose and use materials to make things that work better or are more fun?



MAUNGA NEWSLETTER

Term 2 2025



ELIM EXPLORATION: WHAKAAHUA / DESIGN

FOCUS: SCIENCE - How can we use our creativity and ideas to design something that makes life easier or helps solve a problem?

ARISE Aspect: COURAGE

Literacy

All four classes in the Maunga Team are participating in the Structured Literacy programme (BSLA). Students are working at different Taumata according to their needs. They will work in small groups for reading instruction which will teach them how to blend sounds together to read text with fluency. As a class, students will explore quality picture books to understand vocabulary, characters, setting, problems and plot as a means of building reading comprehension skills. They also take part in whole class sessions working with listening to words and separating out sounds as well as blending letters and sounds to read words.

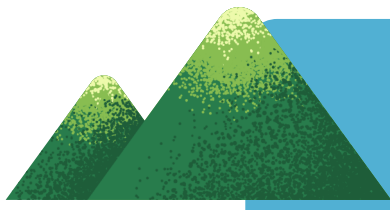
The phonics focus are as follows:

- **Putakitaki and Piwauwau: Target graphemes**, Single consonants, short vowels, consonant digraphs (e.g., s, ss blends, f, g, r, w, h, k, sh, ck, ch, v, ng).
- **Piwauwau Target Graphemes**: th, y, z, short vowels, double consonants, tch, x, ee, blends (with s, l and r), end blends (e.g. sk, st, nk), endings such as ing and ly, oo, wh and qu
- **Piwakawaka and Kea**: Target graphemes, vowel digraphs, early morphemes (ing, s, er, est, ed, ly), and more complex manipulation skills (e.g., i-e, a-e, o-e, u-e, short/long vowel revision, alternative c and g, -ing, -ed, y).
- **Year 4 (Taumata 4)**: Vowel teams, r-controlled vowels, alternate spellings, diphthongs, and tense markers (e.g., ai, ay, ar, oa, igh, ea, ur, or, er, air, ph, ow, ou, oy, oi).

Mathematics

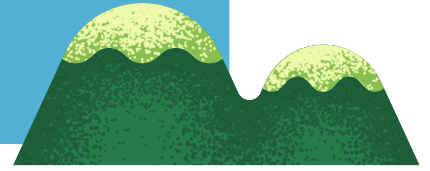
For Maths, we are using the **Maths - No Problem! programme**, a structured maths programme, which is tailored to each year level. The whole-class plan below outlines the general focus, but individual ākonga will be supported in small groups for more personalised learning.

- **Year One Students** will explore the concepts of :
 - positional language (on, over, under, beside...), zero, one less than and one more than, ordinal language (first, second, third), counting on/counting back to add and subtract, adding to 5 and 10.
- **Year Two Students** will explore the concepts of:
 - different strategies to add and subtract (counting on/back, making 10's, subtracting from 10), shapes and solids, grouping and making patterns with shapes, measuring perimeter, area, length and height with objects and units.
- **Year Three Students** will explore the topics of:
 - solving division by grouping and by sharing equally by 2, 5 and 10, odd and even numbers, picture graphs as well as measuring length, weight and temperature
- **Year Four Students** will explore the topics of:
 - multiplication and division using various strategies including written algorithms, measuring volume, weight and length. They will also explore rounding numbers to 100.



MAUNGA NEWSLETTER

Term 2 2025



ELIM EXPLORATION: WHAKAAHUA / DESIGN

FOCUS: SCIENCE - How can we use our creativity and ideas to design something that makes life easier or helps solve a problem?

ARISE Aspect: COURAGE

Notices

Talofa, Kia Ora, Malo e Lelei, Kia Orana, Fakalofa Lahi Atu, and warm greetings to all our wonderful parents and caregivers!

We hope you and your families are enjoying a smooth and positive start to Term 2. It is a joy to work with your tamariki and see them growing in confidence, character, and curiosity each day. We have a few upcoming events and opportunities we would love to share with you:

Expression of Interest Tour

We are hosting a special Expression of Interest Tour for families who may be considering Elim Christian College Henderson for their child. If you know any whānau or friends who are exploring schooling options, we warmly encourage you to pass this information on.

Please ask them to contact our school office to register their interest so we can include them in this opportunity.

Education Outside the Classroom – Parent Information Evening

Join us for an evening to learn more about how we use Education Outside the Classroom (EOTC) to support student learning and growth.

 Tuesday 3rd June  5:30pm

This session will help you understand how these learning experiences are planned and why they are such a valuable part of our curriculum.

Digital Navigators Evening

We are also hosting a Digital Navigators Evening to support families as we help our tamariki grow into wise and safe users of digital technology.

 Tuesday 17th June  5:30pm

This is a great opportunity to explore how digital learning works at school and how we can work together to guide our children in a digital world.

If you ever have any questions, thoughts, or would simply like to connect, we are always happy to make a time to meet with you. Please don't hesitate to reach out to us.

Kind Regards

Maunga Team : Sarah de Raat, Hannah Simmons, Erin Zhang and Stephen Ryan

