

# MAUNGA NEWSLETTER

Term 3 2025



## ELIM EXPLORATION: HAPORI WHĀNUI / COMMUNITY

*FOCUS: SOCIAL SCIENCE - How do people in our community work together and connect with each other to make it a better place for everyone?*

**ARISE Aspect: KINDNESS / AROHA**

### Bible Programme

This term, we will explore scripture and Bible characters that help us to show kindness.

**Ākonga will learn:**

- to show kindness by helping and including others
- to use kind and encouraging words to support friends
- to forgive others and show patience
- to be a light in my class by sharing, caring, and doing what's right, helping others see Jesus' love through my actions.

### Study Scripture

**Weeks 1-3**

"Be kind and compassionate to one another, forgiving each other, just as Christ God forgave you." - Ephesians 4:32

**Weeks 4-6**

"Above all, love each other deeply, because love covers over a multitude of sins." - 1 Peter 4:8

**Weeks 7-8**

"So in everything, do to others what you would have them do to you." - Matthew 7:12

**Weeks 9-10**

"Carry each other's burdens, and in this way you will fulfill the law of Christ." - Galatians 6:2

### Theme / Integrated Inquiry

**Central Idea: HAPORI WHĀNUI / COMMUNITY**

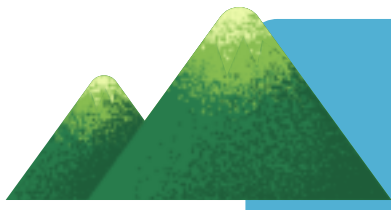
This term, ākonga in Maunga Team will explore how we belong in our communities, and how kindness and responsibility help us care for one another. We'll learn how people live, share, and work together — and how we can do the same.

**Year 1–2 Focus: Belonging and Caring**

- How do we know we belong?
- How do we care for each other?
- What happens when we work together kindly?
- How can we make our class and school better for everyone?

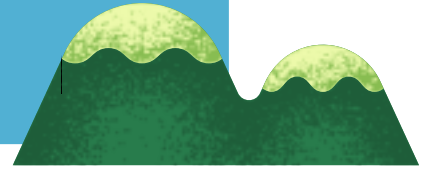
**Year 3–4 Focus: Identity and Responsibility**

- How do places, people, and stories shape who we are?
- Why is kindness and sharing important?
- How can we include and support others?
- How do people in our community help?



# MAUNGA NEWSLETTER

## Term 3 2025



### ELIM EXPLORATION: HAPORI WHĀNUI / COMMUNITY

*FOCUS: SOCIAL SCIENCE - How do people in our community work together and connect with each other to make it a better place for everyone?*

**ARISE Aspect: KINDNESS / AROHA**

#### Literacy

All four classes in the Maunga Team are participating in the Structured Literacy programme (BSLA). Students are working at different Taumata according to their needs. They will work in small groups for reading instruction which will teach them how to blend sounds together to read text with fluency. As a class, students will explore quality picture books to understand vocabulary, characters, setting, problems and plot as a means of building reading comprehension skills. They also take part in whole class sessions working with listening to words and separating out sounds as well as blending letters and sounds to read words.

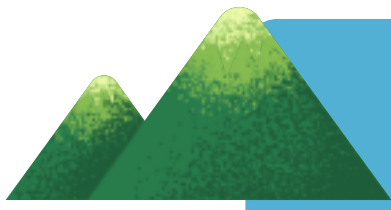
The phonics focus are as follows:

- **Putakitaki and Piwauwau: Target graphemes:** th, y, z, short vowels, double consonants, tch, x, ee, blends (with s, l and r), end blends (e.g. sk, st, nk), endings such as ing and ly, oo, wh and qu
- **Piwauwau Target Graphemes:** endings, soft c and g, short and long vowels, spelling rules about doubling letters and dropping the e, as well as the three sounds of y.
- **Piwakawaka and Kea: Target graphemes:** endings, soft c and g, short and long vowels, spelling rules about doubling letters and dropping the e, as well as the three sounds of y.
- **Year 4 (Taumata 5) Target graphemes:** revision and consolidation of diphthongs (oi, oy, ai, ay, ow, aw and long vowels with silent e), doubling consonants, tch versus ch, long e sounds and r controlled vowels.

#### Mathematics

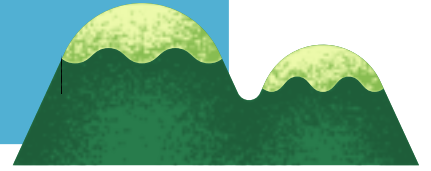
For Maths, we are using the **Maths - No Problem! programme**, a structured maths programme, which is tailored to each year level. The whole-class plan below outlines the general focus, but individual ākonga will be supported in small groups for more personalised learning.

- **Year One Students** will explore the concepts of:
  - number bonds to 10, extending patterns, measuring length and height, capacity- full, empty and half full, rotating and flipping shapes, naming 3D shapes and attributes and counting on to add.
- **Year Two Students** will explore the concepts of:
  - numbers to 40, solving word problems, using equal groups to multiply and divide, using halves, quarters and eighths, counting to 100, telling time to hour and half hours and using calendars.
- **Year Three Students** will explore the topics of:
  - word problems, counting, exchanging and calculating total amounts of money, 2D shapes including lines of symmetry, measuring area, patterns and movement of shapes.
- **Year Four Students** will explore the topics of:
  - rounding numbers, adding and subtracting amounts of money, calculating change and solving money word problems, telling time in hours, minutes and seconds, comparing time, and creating and reading pictographs and bar graphs.



# MAUNGA NEWSLETTER

## Term 3 2025



### *ELIM EXPLORATION: HAPORI WHĀNUI / COMMUNITY*

*FOCUS: SOCIAL SCIENCE - How do people in our community work together and connect with each other to make it a better place for everyone?*

*ARISE Aspect: KINDNESS / AROHA*

#### Notices

Talofa, Kia Ora, Mālō e Lelei, Kia Orana, Fakaalofa lahi atu, and warm greetings to all our wonderful parents and caregivers!

We hope your whānau are having a joyful and settled start to Term 3. It's a privilege to work with your tamariki each day and see them growing in confidence, kindness, and a sense of belonging.

This term, Maunga Team learners are exploring how we belong in our communities, and how we can help those around us through kindness, care, and responsibility. It's been a wonderful topic to spark conversation and action in our classrooms.

We'd love to keep you updated on some upcoming events and opportunities:

**Whānau Interviews** – Ongoing Opportunities

Thank you to everyone who took part in our recent whānau interviews. If you weren't able to meet with your child's teacher, you are warmly invited to email us at any time to arrange a meeting – we're always happy to connect.

**Teacher Only Day** – Monday 11 August

School will be closed for students on this day while teachers take part in professional learning as part of the Mathematics Curriculum Refresh.

**Dance Lessons** – Friday 25 July & Friday 1 August

We're excited to offer dance sessions during school time, where tamariki will get active and build confidence through creative movement and rhythm.

**Hui Fono** – Tuesday 26 August, 6:00pm

Please join us for a special evening where we'll come together as a school community to share ideas and input into the life of our kura. All whānau are welcome!

**Samaritan Week** – 1 to 5 September

During this special week, ākonga will take part in giving back to the community in small but meaningful ways. More details will be sent home closer to the time.

As always, if you have any questions or would just like to connect, please don't hesitate to reach out. We love working together with you in partnership.

Kind regards,

The Maunga Team – Sarah de Raat, Anél Viljoen, Hannah Simmons, Erin Zhang, and Stephen Ryan

